

# MSECURITY

## READING SOFTWARE PLATES

### GENERAL CHARACTERISTICS

MSecurity is a software package with user interface for the acquisition and analysis of vehicle license plates, dangerous goods and traffic statistics data.

MSecurity is an integrated solution that allows you to provide statistical information on traffic flows, useful to various Local Authorities (Mobility Offices, Technical Offices, etc.).

Vehicle license plates are generally read directly by smart cameras through specific image processing algorithms, and then sent to the software MSecurity.

Alternatively, the acquisition of vehicle license plates, or identification codes of dangerous goods, can be performed by the software MSecurity, which analyses images from video surveillance cameras and uses specific image recognition algorithms (optional).

The software MSecurity allows you to recall the license plates stored in the database based on general search criteria (the time interval, the type of vehicle, etc.) or specific ones (the license plate number). MSecurity allows you to automatically report

and immediate, the transit of wanted vehicles present in "blacklists".

Access to the Civil Motorization database (optional) allows reporting, both centrally and on portable devices supplied to patrols, the transit of vehicles that do not comply with RC insurance and/or have expired MOT. Any patrols present in the area can thus specifically check the vehicles reported by the system.

The acquisition of identification plates of dangerous goods (optional) allows you to obtain important information on the type and transit of individual types of goods.

The functionality for the statistical analysis of license plates MSecurity (optional) allows to obtain strategic information for the main players operating in the mobility sectors.

## MAIN FEATURES

- Monitoring of vehicle license plates and dangerous goods
- Identifying vehicles without liability insurance coverage
- Identification of vehicles with expired inspection
- Alarm management
- Data analysis



## TECHNICAL FEATURES

### USER INTERFACE

- WEB-based, WEB-GIS, available on fixed and mobile devices
- Access via username and password

### GIS

- View with camera installation points

### MAIN FEATURES

- Search by: date, gate, vehicle type
- Identification of vehicles without valid liability insurance coverage (optional)
- Dangerous goods monitoring (optional)
- Definition of blacklist with automatic reporting

### STATISTICAL ANALYSIS

- Number of vehicles
- Nationality, etc.,

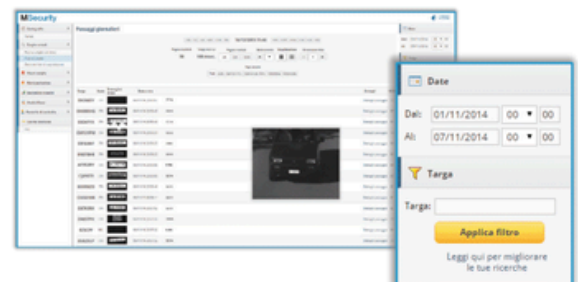


Fig. 2: "License Plate Search" function



Fig. 3: "License Plate Views" functionality

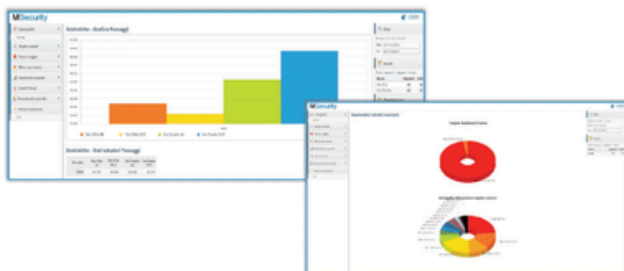


Fig. 1: "Statistical Analysis" functionality



Fig. 4: "Dangerous goods" functionality